

## • DB Style Extension Cables •

<b>CTG</b> <b>Part Number</b>	<b>Tech Data</b> <b>Part Number</b>	<b>Product</b> <b>Description</b>
02713	100708	15' DB9 Male to Female
02655	100515	6' DB25 Male to Female
02656	100516	10' DB25 Male to Female
02658	100517	15' DB25 Male to Female
02565	100518	6' DB25 Male to Male
02666	100519	10' DB25 Male to Male
02668	100520	15' DB25 Male to Male



## • Fiber Optic Cables •

<b>CTG</b> <b>Part Number</b>	<b>Tech Data</b> <b>Part Number</b>	<b>Product</b> <b>Description</b>
05576	100575	1m ST-ST
05577	100576	3m ST-ST
05580	100577	6m ST-ST
09113	100632	1m SC-SC 62.5/125
09115	100633	3m SC-SC 62.5/125
09163	100634	6m SC-SC 62.5/125
09128	100635	1m ST-SC 62.5/125
09130	100636	3m ST-SC 62.5/125
09135	100637	6m ST-SC 62.5/125



## • Keyboard Cables •

<b>CTG</b> <b>Part Number</b>	<b>Tech Data</b> <b>Part Number</b>	<b>Product</b> <b>Description</b>
02714	100656	6' Coiled PS/2 Keyboard, Male to Female
02716	100655	10' Coiled PS/2 Keyboard, Male to Female
02715	100654	6' PS2 Keyboard, Male to Female - Straight
04999	100650	10' PS2 Keyboard, Male to Female - Straight
09469	100652	15' PS2 Keyboard, Male to Female - Straight
02692	100648	6' PS2 Keyboard, Male to Male - Straight
09471	100646	10' PS2 Keyboard, Male to Male - Straight
02707	100653	6' AT Keyboard, Male to Female - Straight
02708	100649	10' AT Keyboard, Male to Female - Straight
02709	100647	6' AT Keyboard, Male to Male - Straight
02710	100645	10' AT Keyboard, Male to Male - Straight
09465	100651	15' Din5 Male to Din5 Female



## • LapLink Cables •

<b>CTG</b> <b>Part Number</b>	<b>Tech Data</b> <b>Part Number</b>	<b>Product</b> <b>Description</b>
02896	100537	6' LapLink DB25 Male/Male
02897	100534	6' Serial LapLink DB9F/DB25F (4 Connectors)



## • Modem Cables •

<b>CTG</b> <b>Part Number</b>	<b>Tech Data</b> <b>Part Number</b>	<b>Product</b> <b>Description</b>
02995	100521	6' Mac to High Speed Modem Cable - 8 pin
02518	100522	6' AT Style Modem Cable - DB9 Female/DB25 Male
03087	100523	6' PC Style Modem Cable - DB25 Male/DB25 Female
09488	100715	V.35 M/M All Lines Molded Cable



## • Null Modem Cables •

<b>CTG</b> <b><u>Part Number</u></b>	<b>Tech Data</b> <b><u>Part Number</u></b>	<b>Product</b> <b><u>Description</u></b>
03011	100532	6' Null Modem Cable DB25 Female to Female
03029	100667	6' Null Modem Cable DB25 Male to Female
03039	100668	6' Null Modem Cable DB25 Male to Male



## • Parallel Printer Cables - IEEE 1284 •

<b>CTG</b> <b><u>Part Number</u></b>	<b>Tech Data</b> <b><u>Part Number</u></b>	<b>Product</b> <b><u>Description</u></b>
02300	100535	6' DB25M/Centronics 36 M (A-B)
06091	100536	10' DB25M/Centronics 36 M (A-B)
06092	100643	20' DB25M/Centronics 36 M (A-B)



## • Video Cables •

<b>CTG</b> <b><u>Part Number</u></b>	<b>Tech Data</b> <b><u>Part Number</u></b>	<b>Product</b> <b><u>Description</u></b>
02638	100658	6' DB15 Male to Male
02639	100657	10' DB15 Male to Male
02717	100664	6' VGA Male to Female
02718	100662	10' VGA Male to Female
02719	100663	15' VGA Male to Female
02635	100666	6' VGA Male to Male
09455	100665	10' VGA male to Male



## • Extension Cable Kits •

<b>CTG</b> <b><u>Part Number</u></b>	<b>Tech Data</b> <b><u>Part Number</u></b>	<b>Product</b> <b><u>Description</u></b>
06026	100631	6' PS/2 Kit - PS/2 Keyboard, VGA M/F, and Mouse M/F
00655	100630	6' PC Kit - AT M/F Keyboard, VGA M/F, DB9 M/F Mouse, Power

## • Gender Changers and Adapters •

<b>CTG</b> <b><u>Part Number</u></b>	<b>Tech Data</b> <b><u>Part Number</u></b>	<b>Product</b> <b><u>Description</u></b>
02771	100641	DB9 Gender Changer Male to Male
02769	100640	DB9 Gender Changer Female to Female
02760	100639	DB25 Gender Changer Male to Male
02756	100638	DB25 Gender Changer Female to Female
02782	100524	DB9 Slimline Gender Changer Male to Male
02781	100525	DB9 Slimline Gender Changer Female to Female
02776	100526	DB25 Slimline Gender Changer Male to Male
02774	100527	DB25 Slimline Gender Changer Female to Female
02446	100528	AT Serial Adapter (DB9 Female/DB25 Male)
02448	100626	AT Serial Adapter (DB9 Female/DB25 Female)
02449	100529	AT Adapter (DB9 Male/DB25 Female)
02457	100661	VGA - Multisync Monitor Adapter (DB15HD Male/DB9 Female)
02475	100530	PS/2 Keyboard Adapter 6 pin mini din Female/5 pin din Male
02476	100531	PS/2 Keyboard Adapter 6 pin mini din Male/5 pin din Female
02755	100669	Parallel Cable Adapter DB25F/C36M
02757	100670	Parallel Cable Adapter DB25M/C36F



## • Automatic KVM Switchboxes •

CTG <u>Part Number</u>	Tech Data <u>Part Number</u>	Product <u>Description</u>
09394	100628	2-1 Keyboard/Video/Mouse Switch
09393	100514	4-1 Keyboard/Video/Mouse Switch
09396	100629	6-1 Keyboard/Video/Mouse Switch



## • Manual Switchboxes •

CTG <u>Part Number</u>	Tech Data <u>Part Number</u>	Product <u>Description</u>
03359	100659	2-1 DB15 Macintosh Video Switchbox
03360	100660	4-1 DB15 Macintosh Video Switchbox
03289	100512	2-1 DB25 T-Switch
03297	100513	2-2 DB25 T-Switch
03292	100513	4-1 DB25 T-Switch
03367	100711	2-1 VGA/PS2 Keyboard Switchbox
03369	100712	4-1 VGA/PS2 Keyboard Switchbox
03321	100709	2-1 VGA/AT Keyboard Switchbox
03322	100710	4-1 VGA/AT Keyboard Switchbox



## • Power Cords •

CTG <u>Part Number</u>	Tech Data <u>Part Number</u>	Product <u>Description</u>
03130	100559	6' Power Cord
03134	100677	10' Power Cord



## • Modular Cable •

CTG <u>Part Number</u>	Tech Data <u>Part Number</u>	Product <u>Description</u>
MOD100S4	100589	100' Modular Cable, 4 Conductor Straight
MOD50S4	100604	50' Modular Cable, 4 Conductor Straight
MOD25S4	100603	25' Modular Cable, 4 Conductor Straight
09593	100678	50' RJ11 Cable, 4 Conductor Straight

## • IBM Token Ring Cables •

CTG <u>Part Number</u>	Tech Data <u>Part Number</u>	Product <u>Description</u>
05396	100714	8' Type 6 Patch Cable
07280	100574	8' Type 6 Adapter Cable



## • SCSI Cables - Internal •

CTG <u>Part Number</u>	Tech Data <u>Part Number</u>	Product <u>Description</u>
09476	100539	Internal, 68 pin, 3 drive, 36", (4) DB68m Pin Connectors
09477	100540	Internal, 68 pin, 7 drive, 68", (8) DB68m Pin Connectors
02745	100541	Internal, 50 pin, 3 drive, 36", (4) 50 pin Sockets
10212	100542	Internal, 50 pin, 7 drive, 68", (8) 50 pin Sockets
06605	100686	5' Int. Rib w/7-50 Pin Connectors

## • SCSI 1 Cables •

CTG <u>Part Number</u>	Tech Data <u>Part Number</u>	Product <u>Description</u>
02488	100543	6' SCSI 1 DB25 Male - 50 Centronics Male
09483	100544	10' SCSI 1 DB25 Male - 50 Centronics Male



## • SCSI 2 Cables •

<b>CTG</b> <b>Part Number</b>	<b>Tech Data</b> <b>Part Number</b>	<b>Product</b> <b>Description</b>
07928	100545	6' DB25 Male to Male SCSI 2 Cable (Zip Drive Cable)
03546	100546	3' SCSI 2 C50 Male to Male
03547	100699	7.5' SCSI 2 C50 Male to Male
03563	100547	3.5' SCSI 2 Micro DB50 Male to Male
03564	100698	6' SCSI 2 Micro DB50 Male to Male
07856	100548	3' SCSI 2 Micro DB50 Male - DB25 Male
07857	100549	6' SCSI 2 Micro DB50 Male - DB25 Male
03559	100550	3.5' SCSI 2 Micro DB50 Male - C50 Male
03560	100551	6' SCSI 2 Micro DB50 Male -C50 Male



## • SCSI 3 Cables •

<b>CTG</b> <b>Part Number</b>	<b>Tech Data</b> <b>Part Number</b>	<b>Product</b> <b>Description</b>
07858	100552	3' Micro DB68M - Micro DB68M (Thumbscrews)
07859	100553	6' Micro DB68M - Micro DB68M (Thumbscrews)
08252	100554	3' Micro DB68M (w/Thumbscrews) - Micro DB50M
08253	100556	6' Micro DB68M (w/Thumbscrews) - Micro DB50M
07860	100557	3' Micro DB68M (w/Thumbscrews) - C50M
07861	100558	6' Micro DB68M (w/Thumbscrews) - C50M
07862	100704	3' Micro DB68M-Micro DB68M
07864	100705	6' Micro DB68M-Micro DB68M
07868	100700	3' SCSI2-SCSI3 DB68M-C50M
07869	100702	6' SCSI2-SCSI3 DB68M-C50M



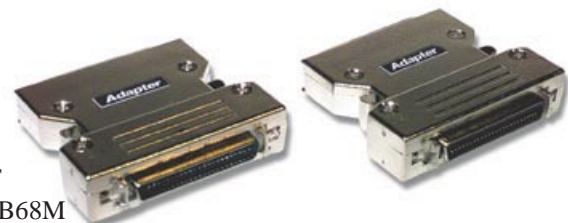
## • SCSI2 to SCSI3 Cables •

<b>CTG</b> <b>Part Number</b>	<b>Tech Data</b> <b>Part Number</b>	<b>Product</b> <b>Description</b>
07868	100700	3' SCSI2-SCSI3 DB68M-C50M
07869	100702	6' SCSI2-SCSI3 DB68M-C50M
08176	100701	3' SCSI2-SCSI3 Micro DB68M-Micro DB50M
08177	100703	6' SCSI2-SCSI3 Micro DB68M-Micro DB50M



## • SCSI Adapters •

<b>CTG</b> <b>Part Number</b>	<b>Tech Data</b> <b>Part Number</b>	<b>Product</b> <b>Description</b>
02494	100682	1' SCSI Adapter Cable DB25M/C50F
09515	100683	SCSI Adapter Micro DB50F/Micro DB68M
09520	100681	SCSI Adapter Centronics 50F/Micro DB68M
05867	100696	SCSI Adapter Micro DB50/50 Cent F
05822	100697	Micro DB50M/DB25F SCSI2 Adapter
05825	100694	C50M with (2) C50F SCSI2 Adapter
05834	100644	Int./Ext. SCSI2 Adapter w/ (3) Conn-Micro DB50F
05860	100695	Micro DB50F/C50M SCSI2 Adapter
09520	100681	C50F/MicroDB68M Adapter



## • SCSI Terminators •

CTG Part Number	Tech Data Part Number	Product Description
03574	100679	50 Cent Male Active Terminator
03572	100680	Micro DB50M Active Terminator
08694	100691	Micro DB68M w/ Thumbscrew Active Term
13178	100680	Micro DB68M w/ Latch Clip Active Termin
13179	100693	Micro DB68M Differential Terminator
03257	100692	C50M Passive Terminator
03261	100689	C50M/C50F Pass thru Terminator
03571	100688	Micro DB50 Passive Terminator
03573	100684	Micro DB50M Differential Terminator
05823	100687	DB25M Passive Terminator



## • Transceiver Cables •

CTG Part Number	Tech Data Part Number	Product Description
03475	100565	6' Office-style Transceiver Cable
03476	100627	10' Office-style Transceiver



## • 10Base2 Adapters & Terminators •

CTG Part Number	Tech Data Part Number	Product Description
02047	100560	Thinnet T-Adapter
02044	100561	Thinnet Terminator

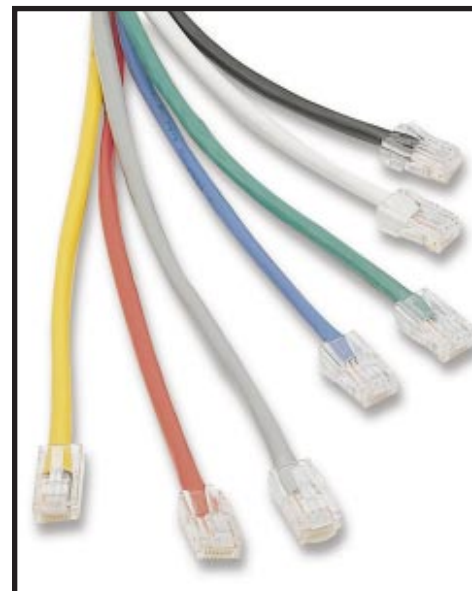
## • 10Base2 Thinnet RG58 Cables •

CTG Part Number	Tech Data Part Number	Product Description
03183	100562	8' RG58 Thinnet Assembly
03186	100563	15' RG58 Thinnet Assembly
03188	100564	25' RG58 Thinnet Assembly



## • 10BaseT Category 5 Patch Cables •

CTG Part Number	Tech Data Part Number	Product Description
05895	100567	3' Cat5 Patch Cable, 4 Pair, Grey
06469	100569	7' Cat5 Patch Cable, 4 Pair, Grey
06470	100571	14' Cat5 Patch Cable, 4 Pair, Grey
05260	100573	25' Cat5 Patch Cable, 4 Pair, Grey
05261	100594	50' Cat5 Patch Cable, 4 Pair, Grey
07204	100597	3' Cat5 Patch Cable, 4 Pair, Red
07207	100598	7' Cat5 Patch Cable, 4 Pair, Red
07210	100595	14' Cat5 Patch Cable, 4 Pair, Red
07213	100596	25' Cat5 Patch Cable, 4 Pair, Red
07205	100566	3' Cat5 Patch Cable, 4 Pair, Blue
07208	100568	7' Cat5 Patch Cable, 4 Pair, Blue
07211	100570	14' Cat5 Patch Cable, 4 Pair, Blue
07214	100572	25' Cat5 Patch Cable, 4 Pair, Blue
07721	100601	3' Cat5 Patch Cable, 4 Pair, Yellow
07965	100602	7' Cat5 Patch Cable, 4 Pair, Yellow
07966	100599	14' Cat5 Patch Cable, 4 Pair, Yellow
07959	100600	25' Cat5 Patch Cable, 4 Pair, Yellow
07722	100592	3' Cat5 Patch Cable, 4 Pair, Green
07910	100593	7' Cat5 Patch Cable, 4 Pair, Green
08275	100590	14' Cat5 Patch Cable, 4 Pair, Green
08142	100591	25' Cat5 Patch Cable, 4 Pair, Green



## • 10BaseT Category 5 Patch Panels •

CTG Part Number	Tech Data Part Number	Product Description
06145	100578	Category 5 Patch Panel, 110 Style, 12 Port
06971	100673	Category 5 Patch Panel, 110 Style, 16 Port
06147	100579	Category 5 Patch Panel, 110 Style, 24 Port
06149	100580	Category 5 Patch Panel, 110 Style, 48 Port



## • Bulk Category 5 Cable •

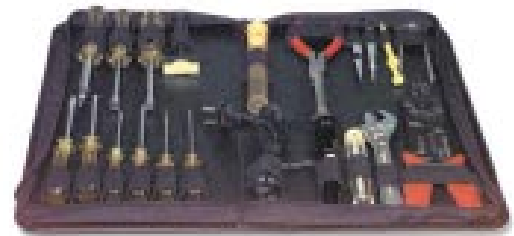
CTG Part Number	Tech Data Part Number	Product Description
07124	100581	Bulk Category 5 Cable, 1000' Box, Plenum Jacket
07125	100582	Bulk Category 5 Cable, 500' Box, Plenum Jacket
07240	100583	Bulk Category 5 Cable, 1000' Box, PVC
07241	100584	Bulk Category 5 Cable, 500' Box, PVC

## • Bulk Category RJ45 Connectors •

CTG Part Number	Tech Data Part Number	Product Description
11380	100585	Bag of 50 Category 5 Rated R

## • Tool Kits and Crimp Tools •

CTG Part Number	Tech Data Part Number	Product Description
04613	100586	Crimp Tool RJ45
04590	100587	11 Piece Tool Kit
04591	100588	21 Piece Tool Kit

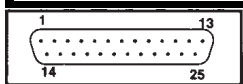


## • Serial I/O Cables •

CTG Part Number	Tech Data Part Number	Product Description
09644	100706	1' Internal Serial I/O Cable 10P-DB25 for Intel Board
02882	100707	1' Internal Serial I/O Cable 10P-DB9F for Intel Board

# Category 5, RJ45 M/M, 568B Cables, 4 Pair

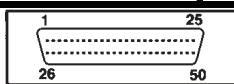
Description	Grey	Blue	Red	Green	Yellow
3' RJ45 Cat 5 Patch Cable	709968	709967	709971	709969	709970
7' RJ45 Cat 5 Patch Cable	709973	709972	709976	709974	709975
14' RJ45 Cat 5 Patch Cable	709978	709977	709981	709979	709980
25' RJ45 Cat 5 Patch Cable	709983	709982	709986	709984	709985



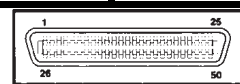
"A" Connector  
=DB25M



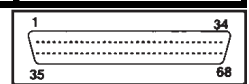
"B" Connector  
=Cent36M



Micro DB50  
Male



Centronics  
50 Male



Micro DB68  
Male